

10 x 10 cm

Vordere Mitte Stoffbruch Fadenlauf / Centre front on fold

2

Für Körpergrösse/ for height/ pour la taille 168 cm:

Grösse/ Size/ Taille	34	36	38	40	42	44	46	48
Oberweite/ Bust/Poitrine	80	84	88	92	96	100	104	110
Taillenweite/ Waist/ Taille	64	67	71	75	79	83	87	94
Hüftweite/ Hip/ Hanche	90	93	96	99	102	105	108	113
Vord. Taillengl./ Front waist length/ Longueur taille devant	42	43	44	45	46	47	48	49
Rückw. Taillengl./ Back waist length/	41	41	41	42	42	42	42	43

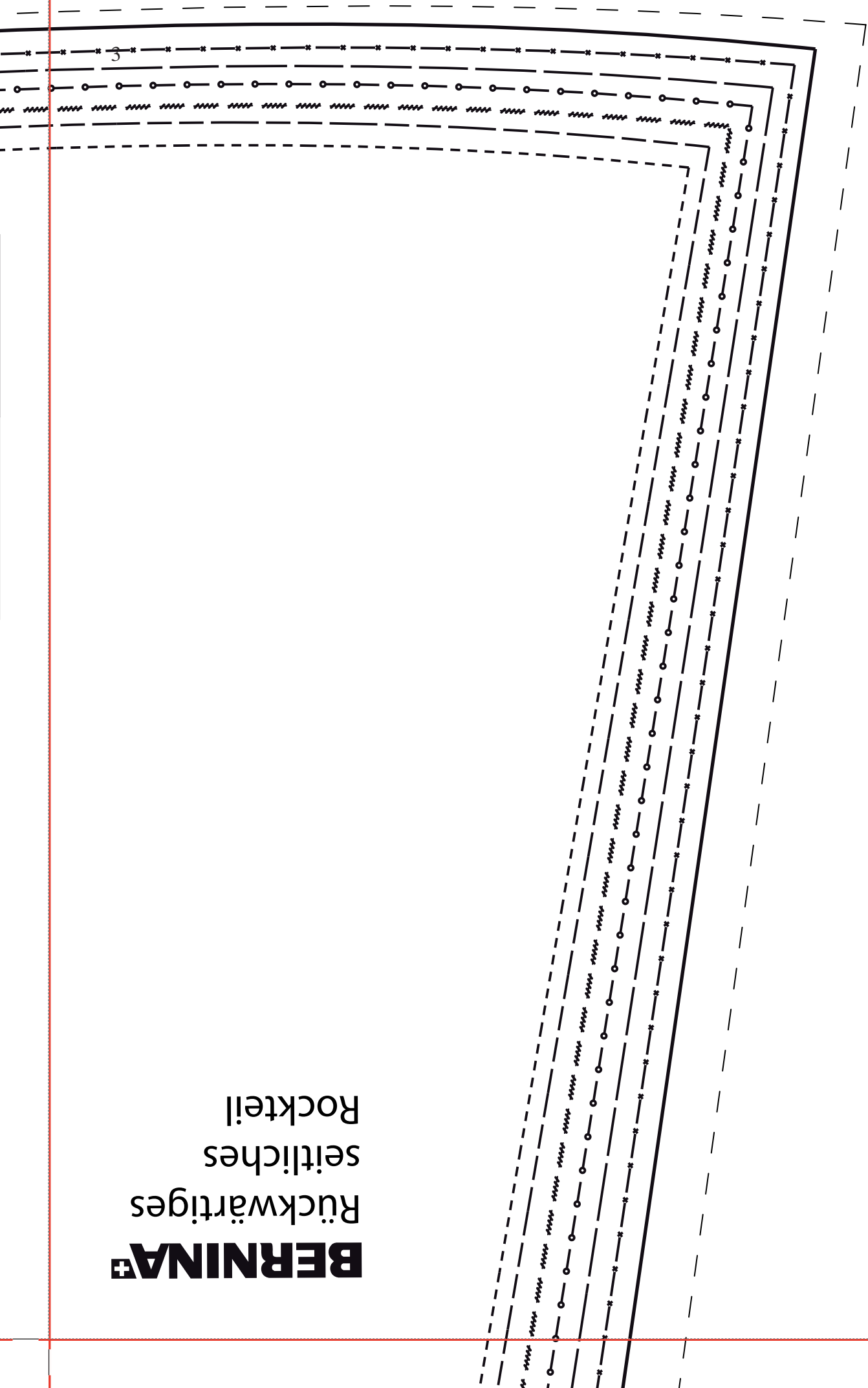
Legende/Legend/ Légend

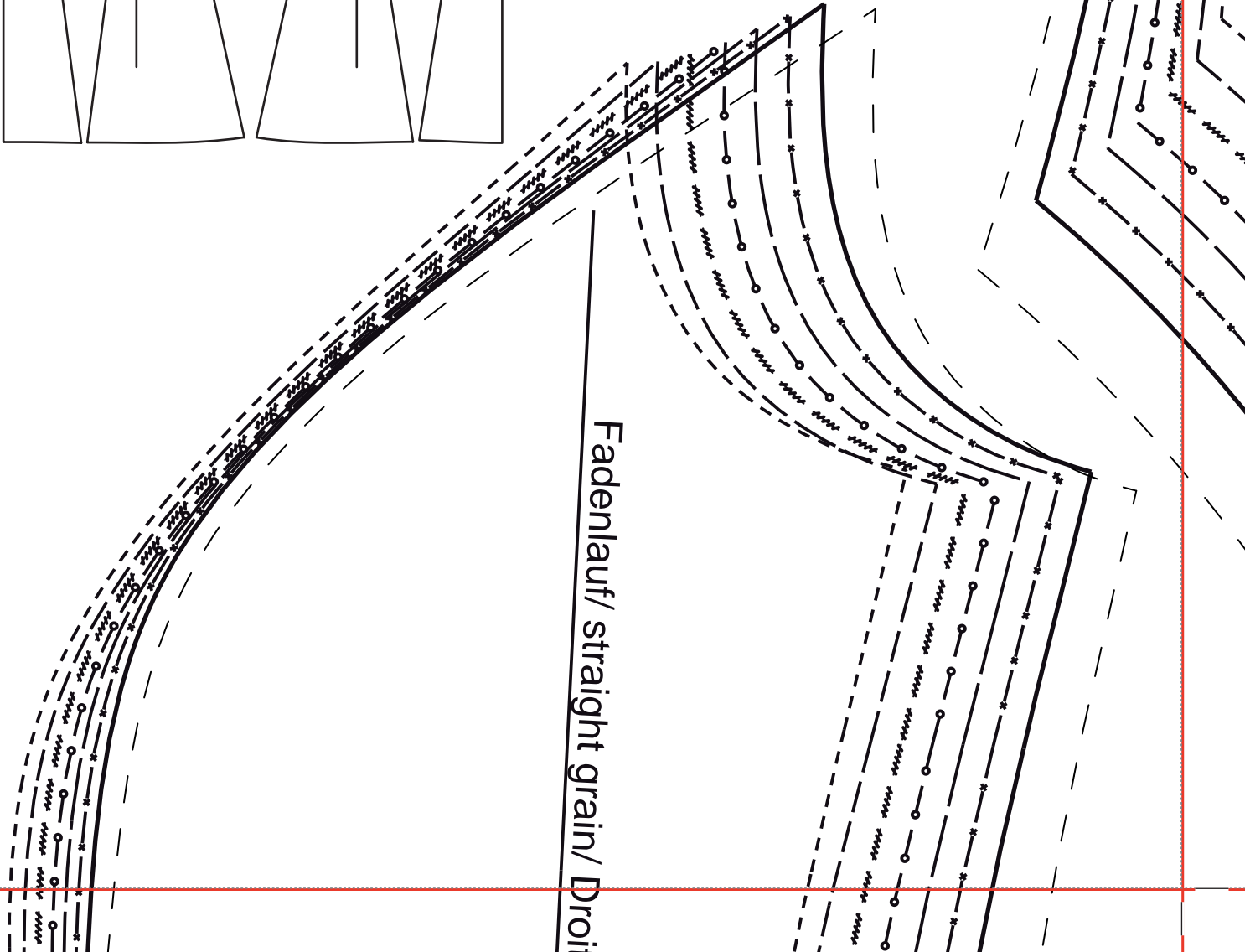
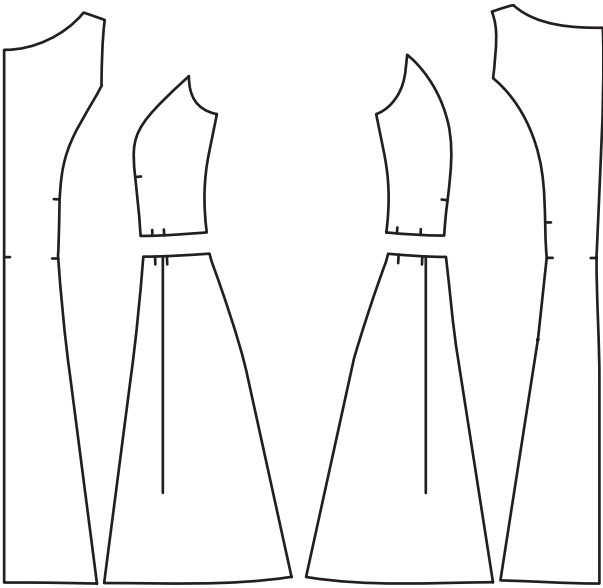
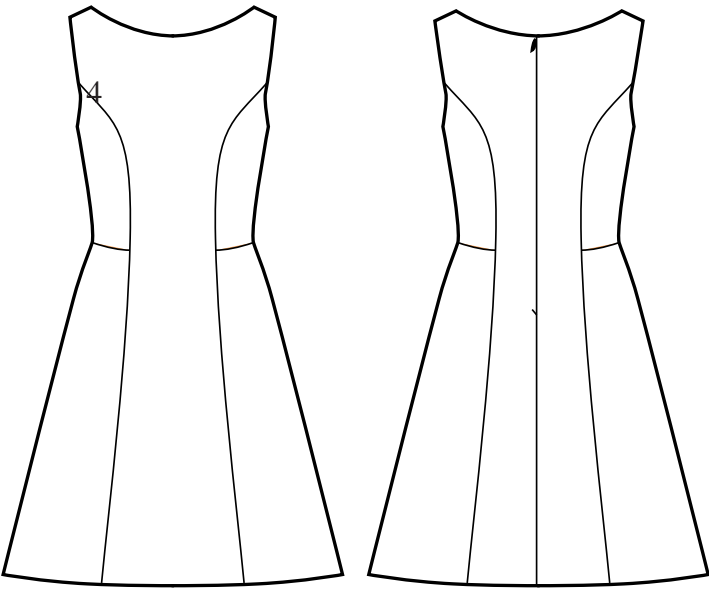
Grösse/ Size/ Taille	-----	34
	—————	36
	~~~~~	<b>38</b>
	—○—○—○—○—	<b>40</b>
	———	<b>42</b>
	—*—*—*—*	<b>44</b>
	—————	<b>46</b>
	-----	<b>48</b>



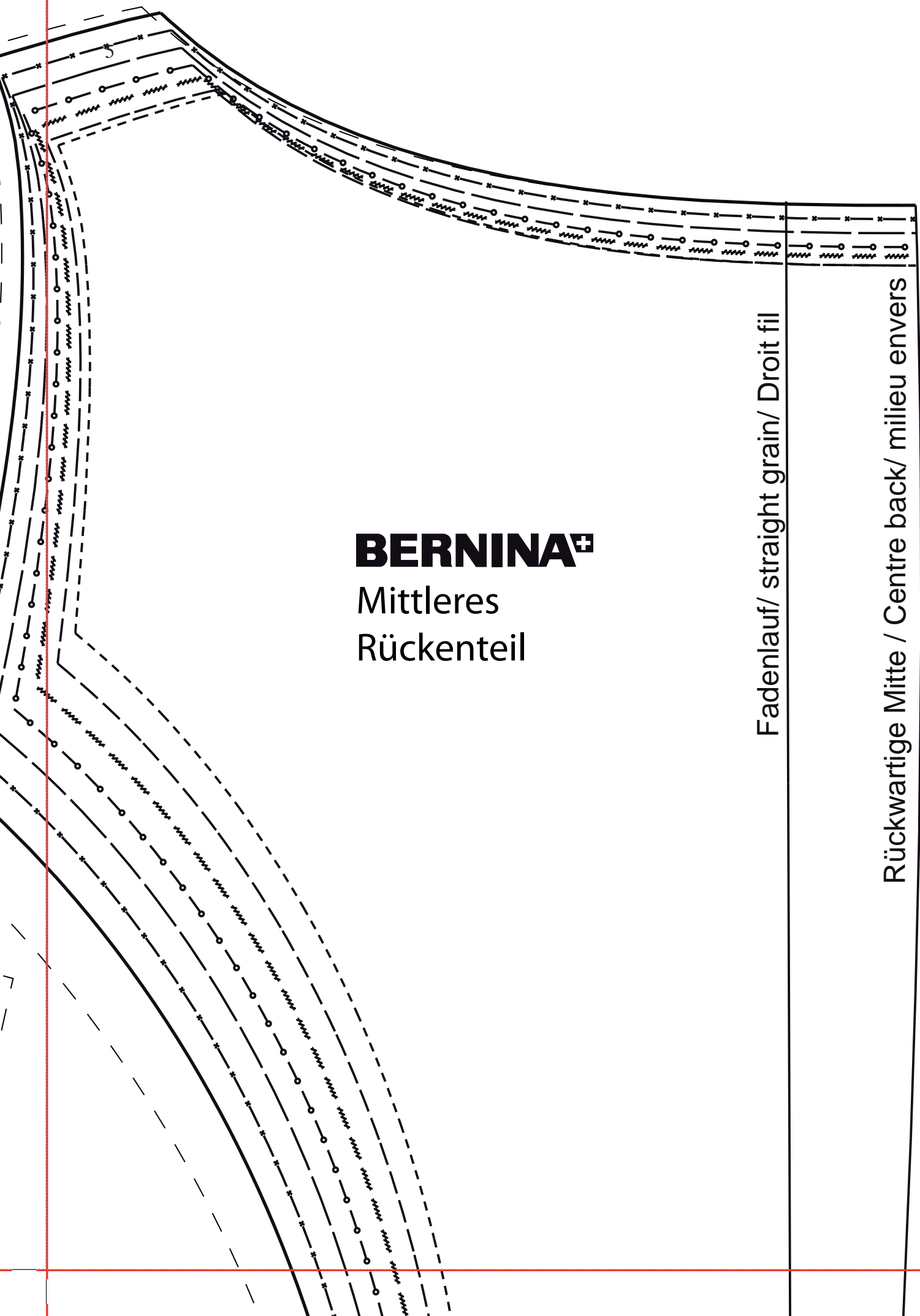
**BERNINA** 

Rückwärtiges  
seitliches  
Rockteil





Fadenlauf/ straight grain/ Droi

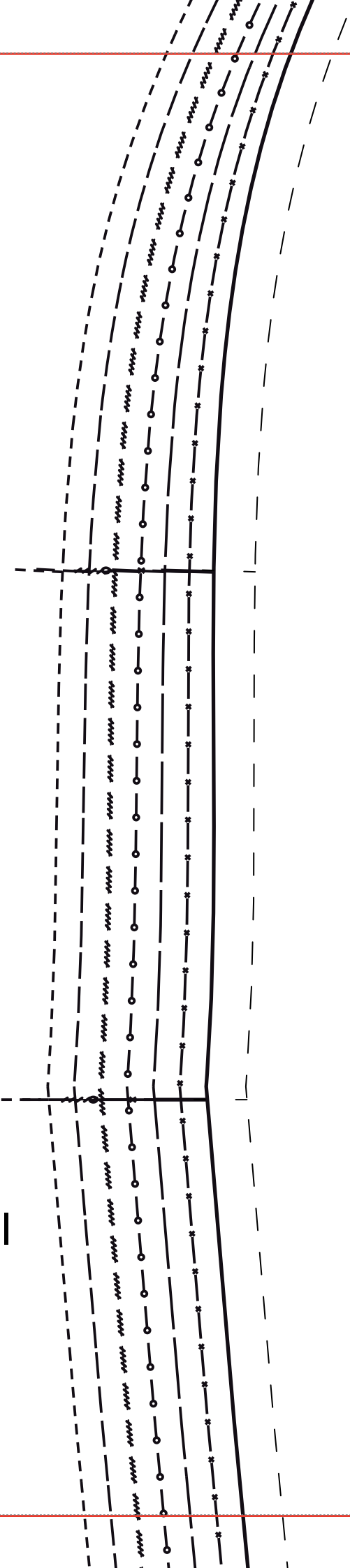


**BERNINA⁺**

Mittleres  
Rückenteil

Fadenlauf/ straight grain/ Droit fil

Rückwärtige Mitte / Centre back/ milieu envers



6

nt on fold straight grain/ Droit fil milieu endroit pli

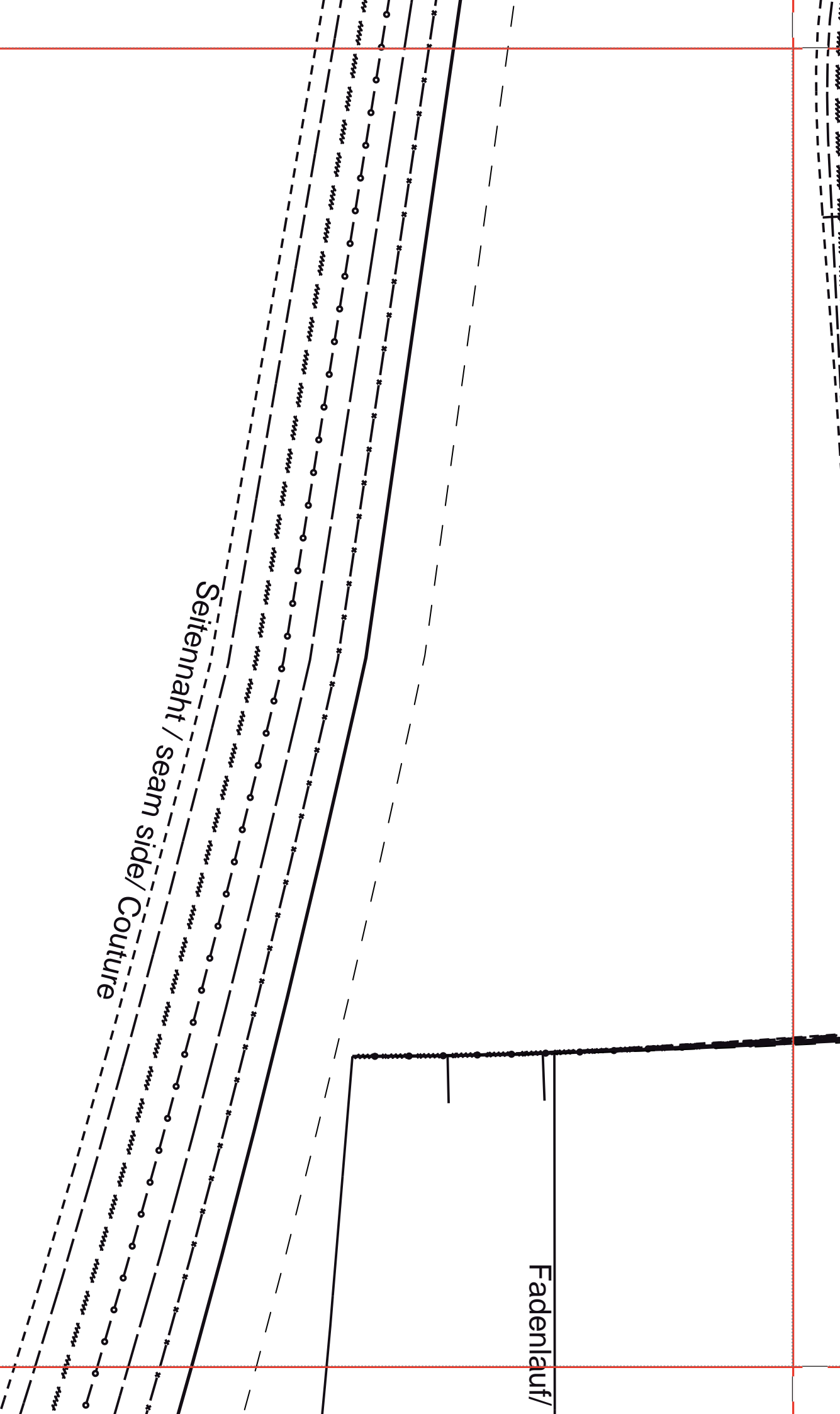
**BERNINA**⁺  
Mittleres Vorderteil



Fadenlauf/ straight grain/ Droit fil

Fadenlauf/

Seitennaht / seam side / Couture



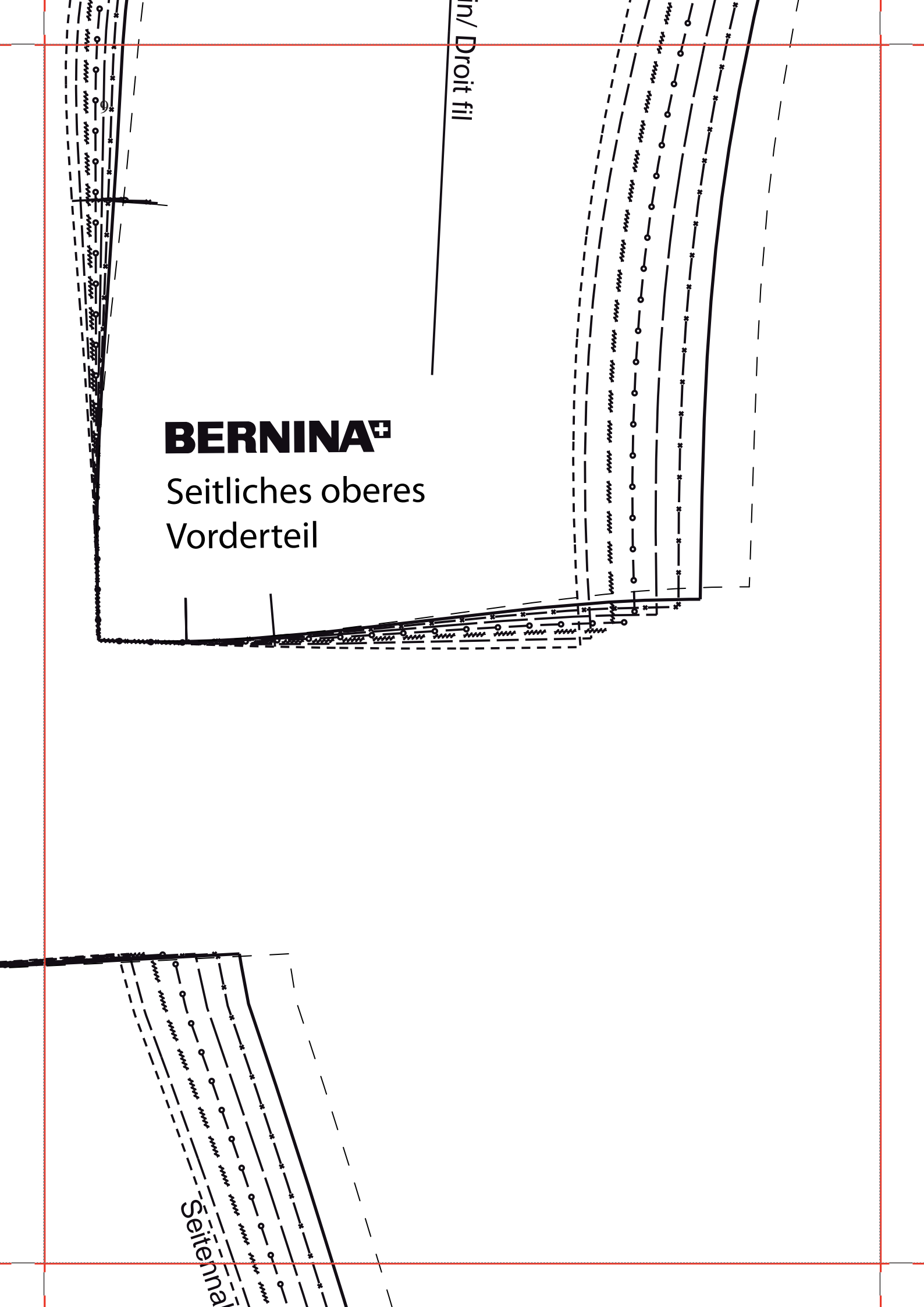


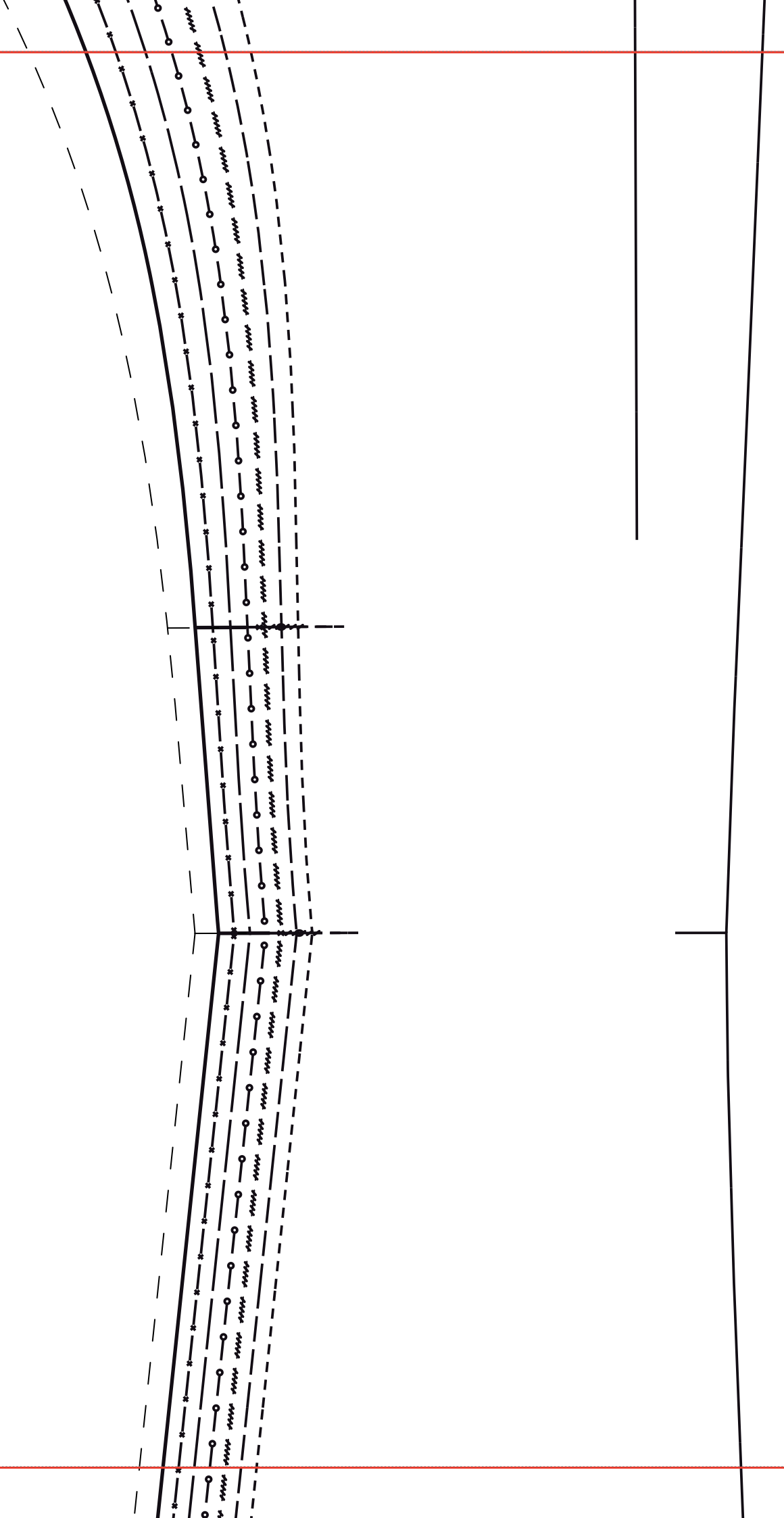
lin/ Droit fil

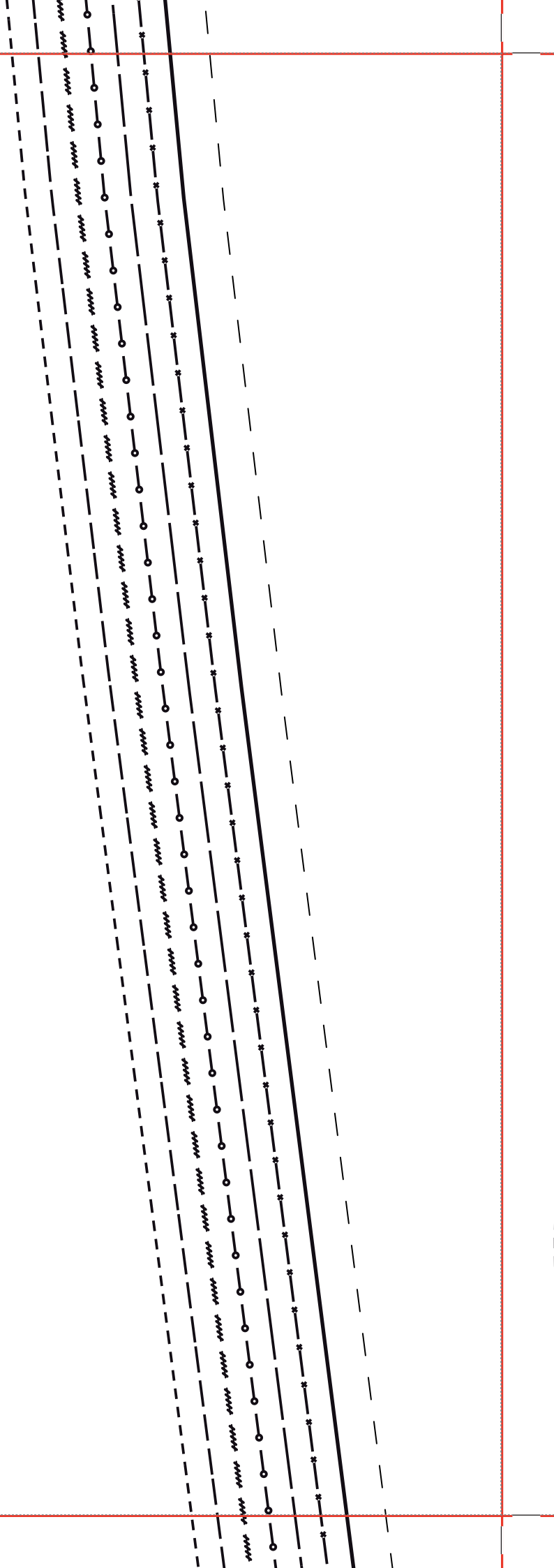
**BERNINA**+

Seitliches oberes  
Vorderteil

Seitennaht

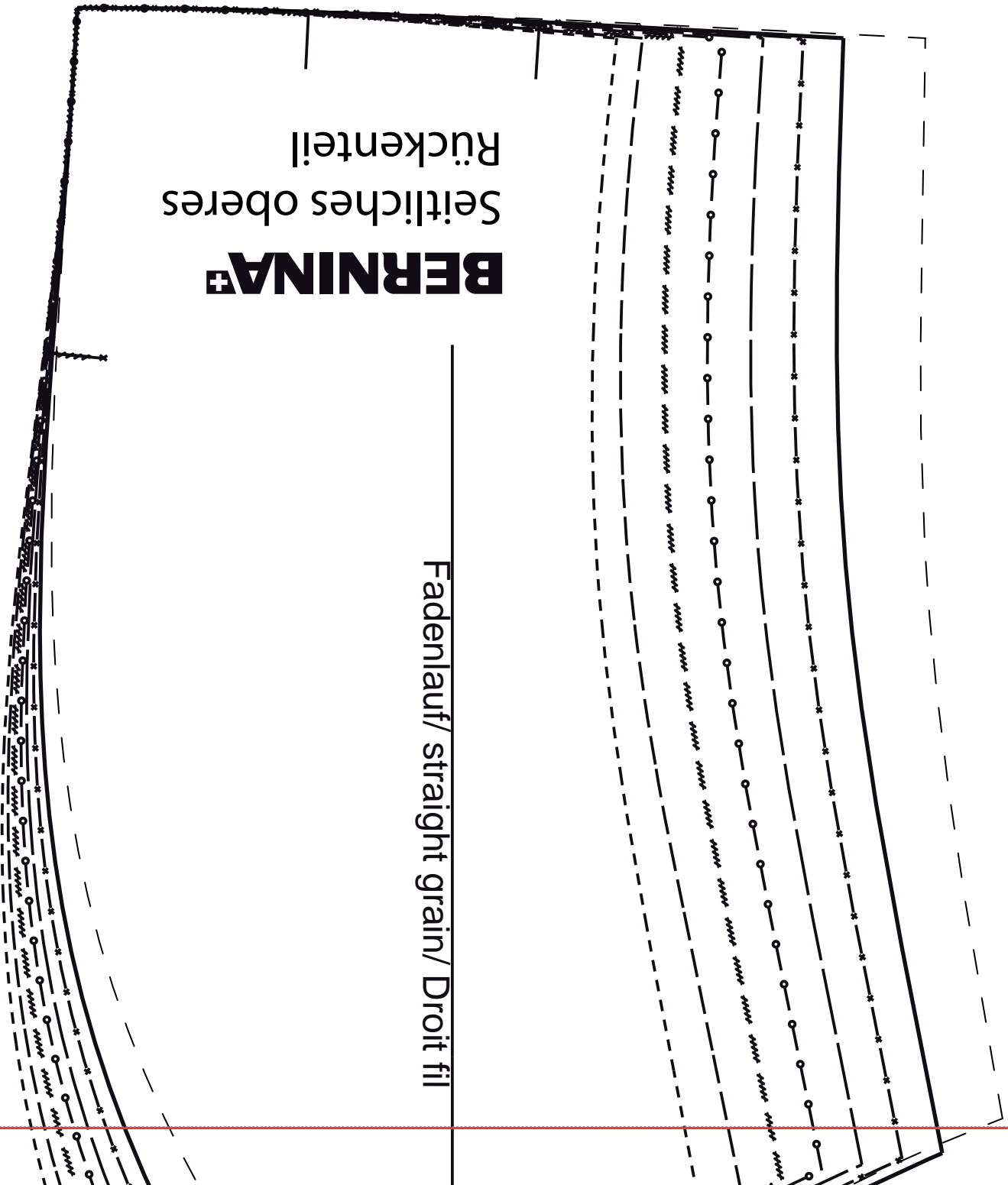






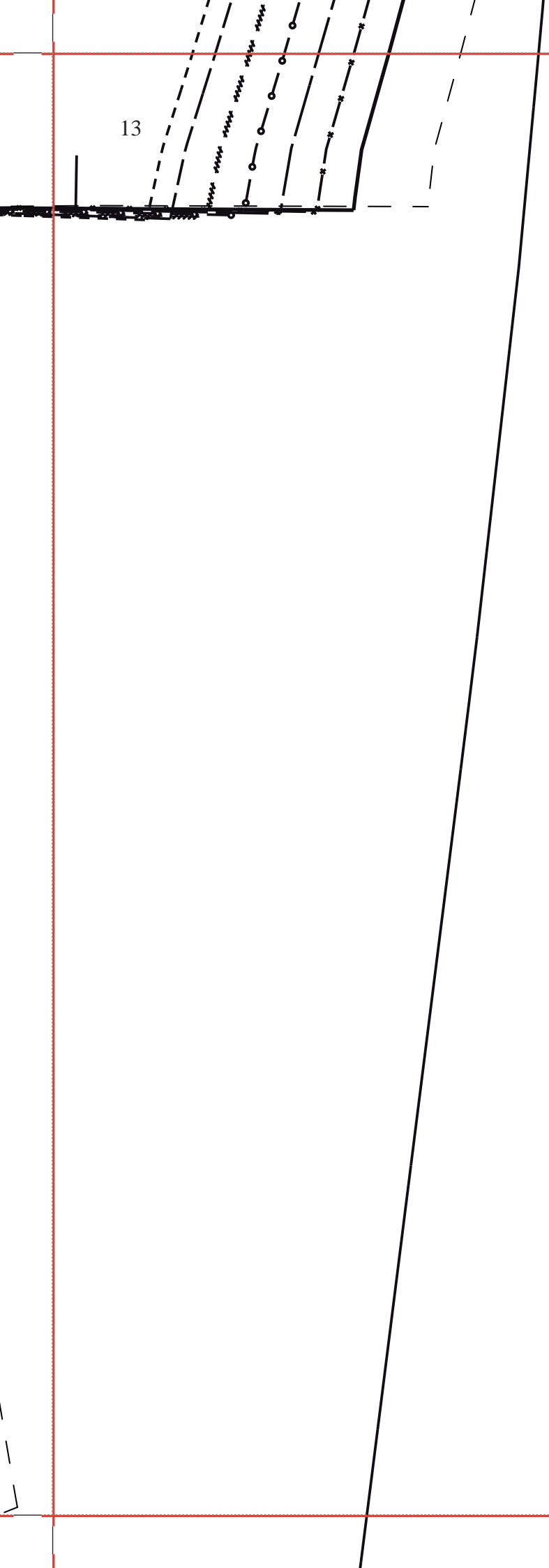
**BERNINA+**  
Seitliches oberes  
Rückenteil

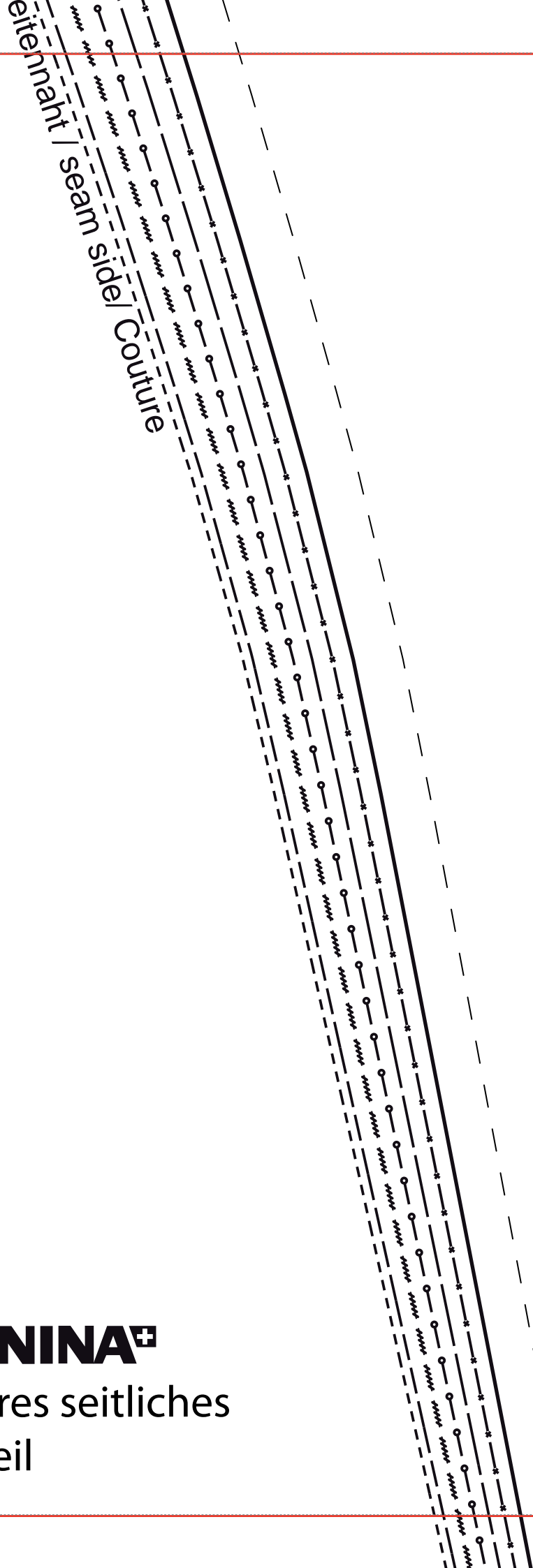
Fadenlauf/ straight grain/ Droit fil



enlauf/ straight grain/ Droit fil

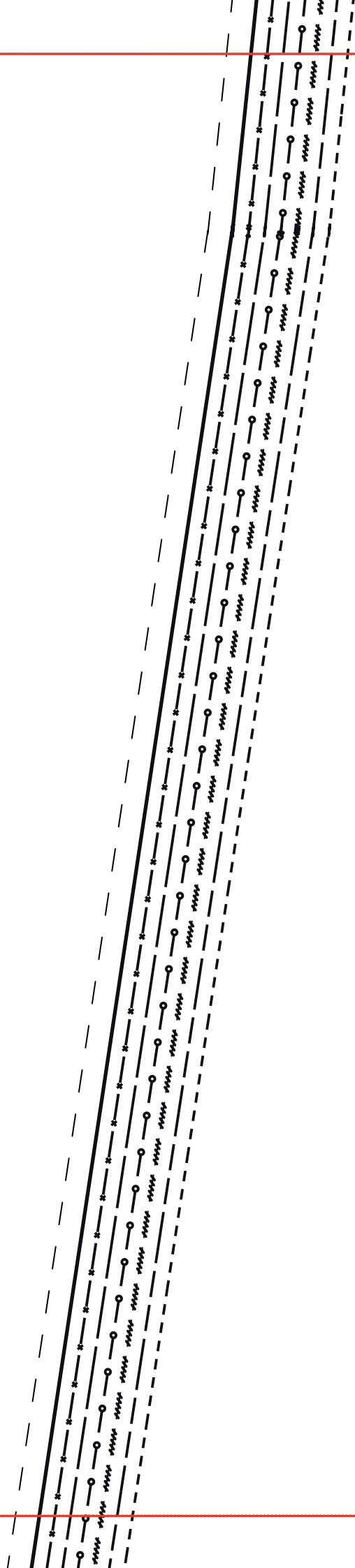
13

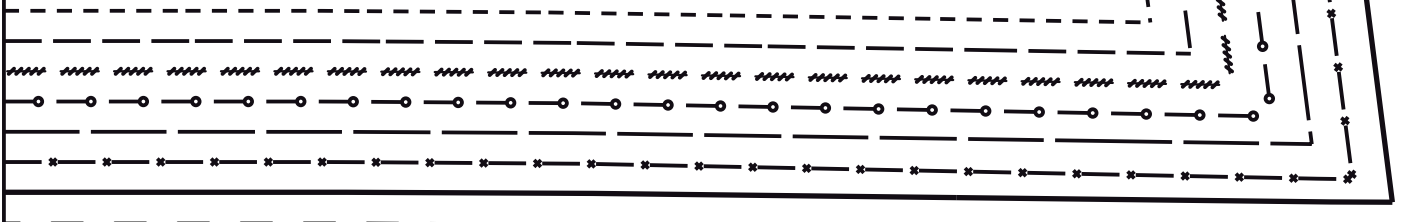
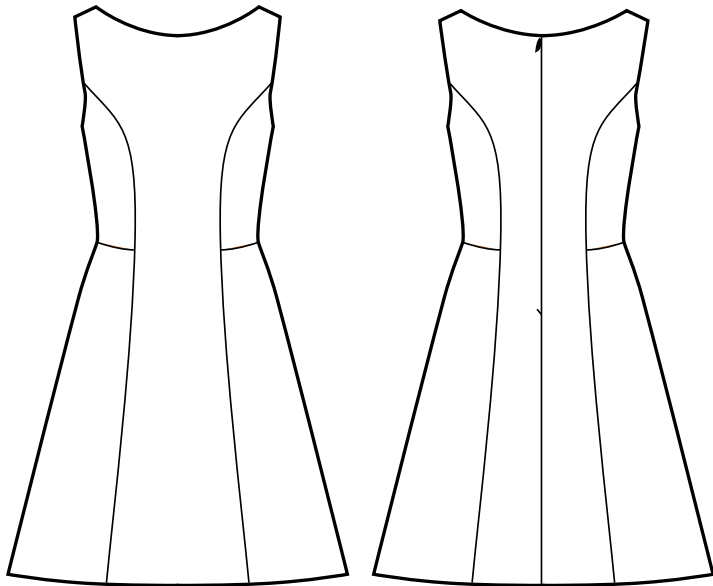




**BERNINA⁺**

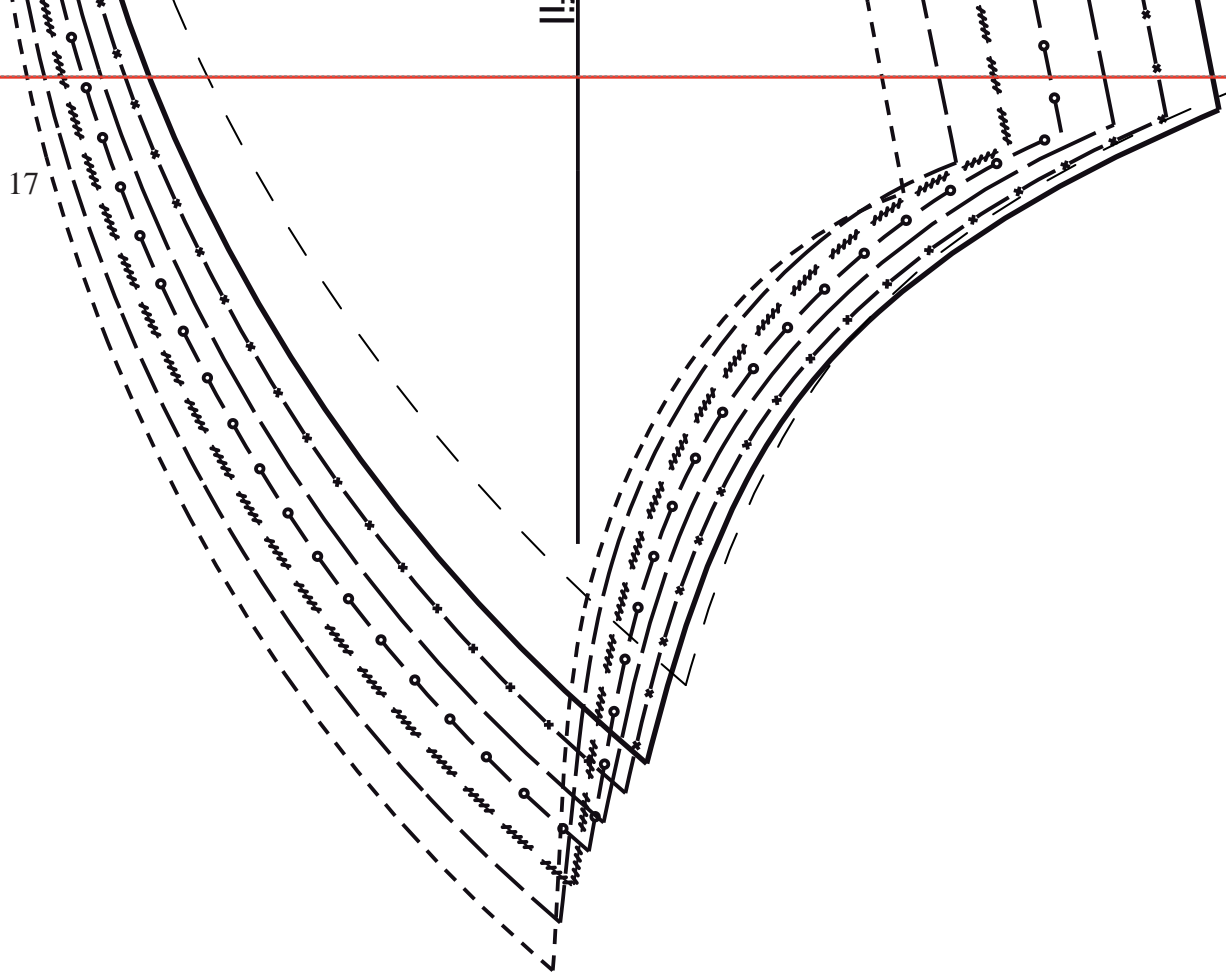
Vorderes seitliches  
Rockteil

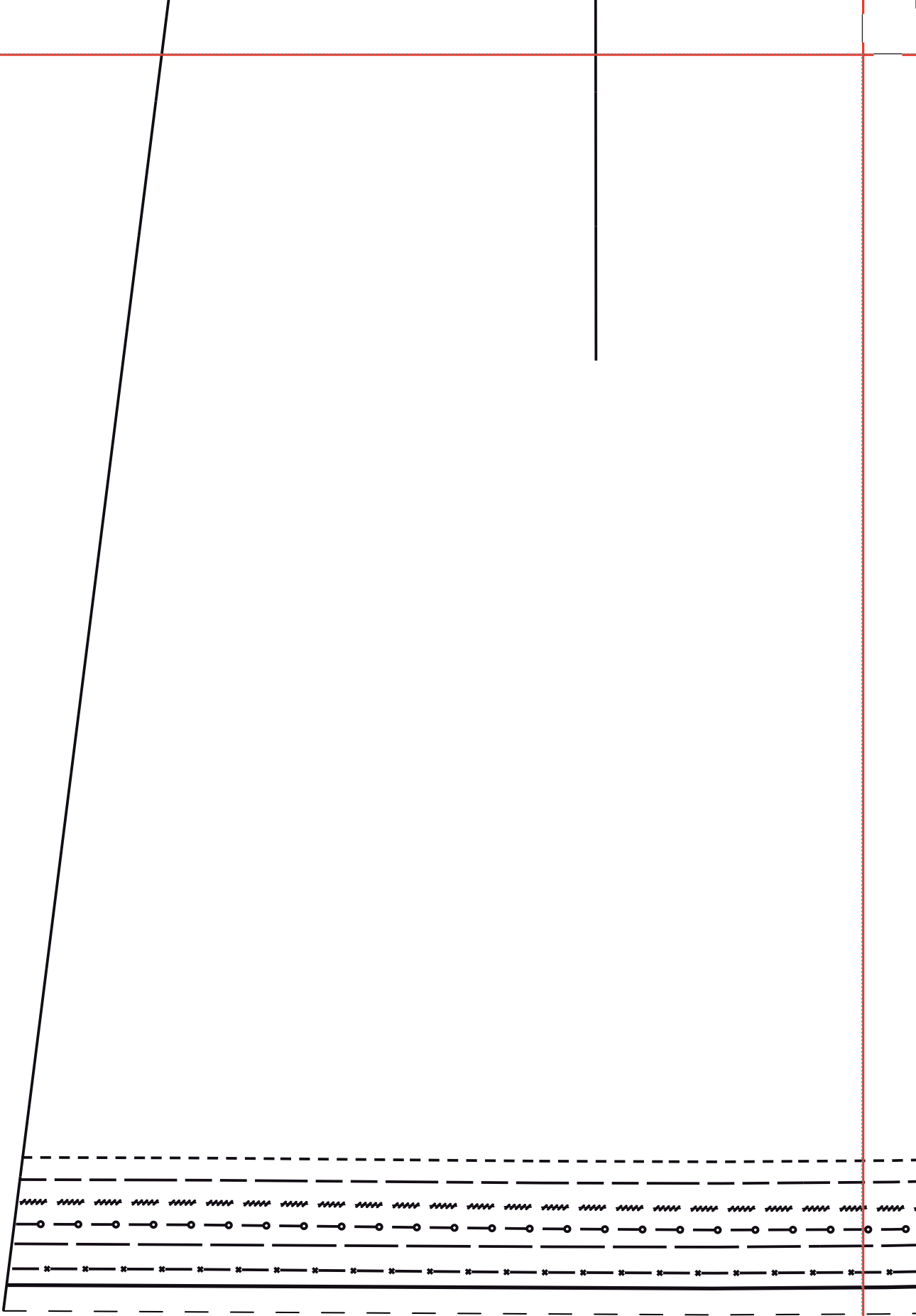


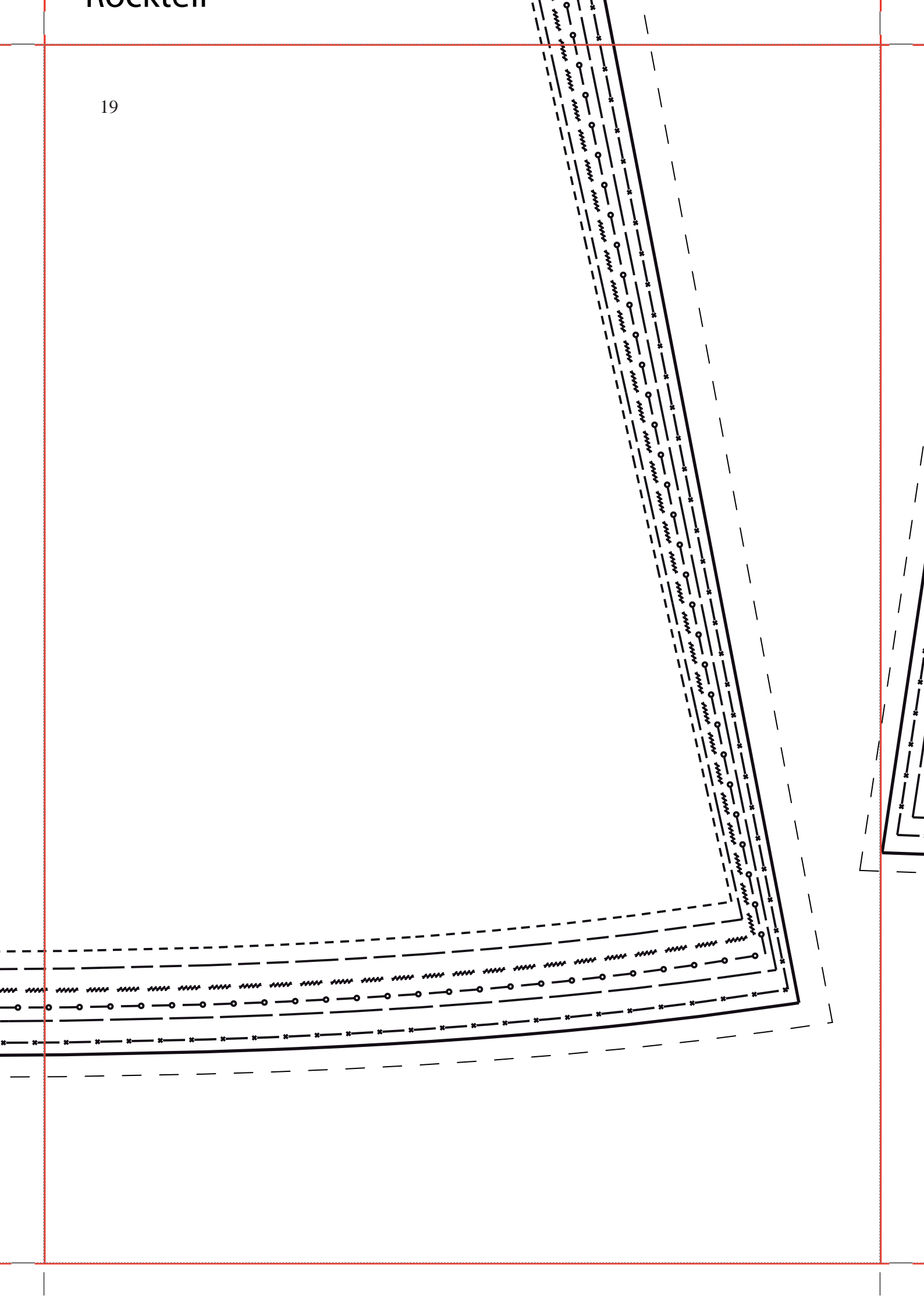




17







20

